



Maximatic®



MAXIMATIC SOLENOID VALVES

Clippard's all-new Solenoid valves are available in 2-way, 3-way and 4-way configurations in port sizes from #10-32 to 1/2" NPT. Select either a direct-acting poppet or solenoid-controlled pilot operated balanced spool design. Spool valves are body ported but can be bolted to a parallel circuit manifold.

These electronic valves offer high flow in a small package, and are constructed of aluminum, stainless steel and thermoplastic materials. The 4-way valves are also available in 3 position versions with either pressure center, closed center or exhaust center spool options.

Materials: Aluminum, Stainless Steel, Thermoplastic

Maximum Pressure: Vacuum to 150 psig (direct-acting only); 30 to 125 on MME-41 Series, 20 to 125 psig on all others (spool valves)

Response Time: Less than 20 ms

Mounting: Manifold standard. Actuator (1/4" only) or NAMUR (3/8" NPT only) available on Page 201.

Manual Override: Locking or non-locking

Electrical Connection: DIN terminal with LED indicator, or 18" Wire Leads

DIN Connector: Plug-in electrical connector with LED. MME-31/41 models are DIN 43650 Form "C" 3 mm screw. All others are DIN 43650 Form "B" 3 mm screw. LED will not "light" if polarity is reversed.

Wire Leads: Not polarity sensitive

Temperature Range: 32° to 150°F (0 to 65°C)

Seals: Buna-N


3- & 4-Way Valves

Port	Cv	Flow Rate	
		@ 50 psig	@ 100 psig
#10-32	0.58	16 scfm	27 scfm
1/8" NPT	0.67	18 scfm	31 scfm
1/4" NPT	0.89	26 scfm	49 scfm
3/8" NPT	1.68	51 scfm	93 scfm
1/2" NPT	2.79	91 scfm	171 scfm

Conforms to ISO 19973-2 test standards.



Maximum Value. Maximum Performance.



Choose either DIN connector with LED indicator or 18" Wire Lead connection. Both are rotatable and interchangeable.

2-, 3- & 4-Way Designs

For side ported manifold mount, the Maximatic line of valves offers both 1/4" actuator mount and 3/8" NAMUR mount

Easily accessible locking or non-locking manual override switch

Port sizes from #10-32 to 1/2" NPT

Buna-N Seals

Sturdy aluminum body withstands rough environments

Closed Center, Pressure Center and Exhaust Center Models Available

Operating ranges to 125 psig

Small size makes valves ideal for use in compact applications

Maximatic® Valves are available as body ported, manifold mount, NAMUR (3/8" NPT only), and Actuator (1/4" NPT only) mounting. Standard models include a base that permits fast, secure mounting of electronic valves to a manifold for grouping in compact assemblies.

A wide variety of voltage options are available including 12-volt DC, 24-volt DC, 24-volt AC, 110-volt AC and 220-volt AC. Consult factory for other voltages.

All Maximatic® Solenoid Valves are IP 65 CE Rating



NEW! MAXIMATIC® SOLENOID VALVES

Valve Series Enter

Electronic E

Air Pilot A

Valve Type Enter

2-Way (Direct-Acting only) 2

3-Way 3

4-Way 4

Body/Port Size Enter

Direct-Acting

1/8" NPT P

1/8" NPT Stacking S

1/4" NPT Q

Spool Type

#10-32 1N

1/8" NPT 1P

1/4" NPT (0.89 Cv) 2Q

1/4" NPT (1.68 Cv) 3Q

3/8" NPT 3W

1/2" NPT 4Z

Primary/Secondary Actuator Enter

Air/Air AA

Air/Spring AS

Electronic Pilot/Elec. Pilot EE

Electronic Pilot/Spring ES

Direct Acting/Spring DS (2- or 3-Way, #10-32, 1/8", 1/4" only)

Mounting Enter

Standard Manifold (blank)

Actuator/NAMUR* B

* Only available on 3- or 4-Way Electronic Valves. 1/4" NPT Actuator or 3/8" NPT NAMUR Mount.

Spool Type Enter

2-Position, Spool (blank)

3-Position, Closed Center C

3-Position, Exhaust Center E

3-Position, Pressure Center P

Only available on 4-Way Valves with "AA" or "EE" Actuator. Standard Manifold Mount only.

Electrical Connector Enter

DIN Connector D

Wire Leads (18") W

Only required on Electronic Valves.

Voltage Enter

12-Volt DC 012

24-Volt DC 024

24-Volt AC 24A

110-Volt AC 110

220-Volt AC 220

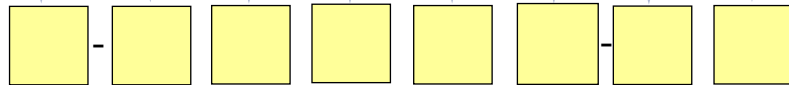
Only required on Electronic Valves.



Single Solenoid Electronic Valves Mounted on 8-Station Manifold

This numbering schematic is shown for illustration purposes only. All possible configurations are not available. For standard models, see the products illustrated in this catalog.

MM



Example: MM - -



2-Way Valves							
Series No.	Style	Inlet	Ports		Function	Cv	Flow @ 100 psig
			Outlet	Exhaust			
MME-2PDS	Poppet	1/8" NPT	1/8" NPT	1/8" NPT	2/2	0.12	6.7 scfm
MME-2QDS	Poppet	1/4" NPT	1/4" NPT	1/4" NPT	2/2	0.12	6.7 scfm
MME-2SDS	Poppet	1/8" NPT	1/8" NPT	1/8" NPT	2/2	0.05	2.3 scfm

3-Way Valves							
Series No.	Style	Inlet	Ports		Function	Cv	Flow @ 100 psig
			Outlet	Exhaust			
MME-3PDS	Poppet	1/8" NPT	1/8" NPT	1/8" NPT	3/2	0.12	6.7 scfm
MME-3QDS	Poppet	1/4" NPT	1/4" NPT	1/4" NPT	3/2	0.12	6.7 scfm
MME-3SDS	Poppet	1/8" NPT	1/8" NPT	1/8" NPT	3/2	0.05	2.3 scfm
MME-31NES	Spool	#10-32	#10-32	#10-32	3/2 NC	0.58	2.3 scfm
MME-31PES	Spool	1/8" NPT	1/8" NPT	1/8" NPT	3/2 NC	0.67	31 scfm
MME-32QES	Spool	1/4" NPT	1/4" NPT	1/8" NPT	3/2 NC	0.89	49 scfm
MME-33WES	Spool	3/8" NPT	3/8" NPT	1/4" NPT	3/2 NC	1.68	93 scfm
MME-34ZES	Spool	1/2" NPT	1/2" NPT	1/2" NPT	3/2 NC	2.79	171 scfm
MME-31NEE	Spool	#10-32	#10-32	#10-32	3/2	0.58	27 scfm
MME-31PEE	Spool	1/8" NPT	1/8" NPT	1/8" NPT	3/2	0.67	31 scfm
MME-32QEE	Spool	1/4" NPT	1/4" NPT	1/8" NPT	3/2	0.89	49 scfm
MME-33WEE	Spool	3/8" NPT	3/8" NPT	1/4" NPT	3/2	1.68	93 scfm
MME-34ZEE	Spool	1/2" NPT	1/2" NPT	1/2" NPT	3/2	2.79	171 scfm

4-Way Valves								Spool Configuration		
Series No.	Style	Inlet	Ports		Function	Cv	Flow @ 100 psig	Closed Center	Exhaust Center	Pressure Center
			Outlet	Exhaust						
MME-41NES	Spool	#10-32	#10-32	#10-32	5/2	0.58	27 scfm			
MME-41PES	Spool	1/8" NPT	1/8" NPT	1/8" NPT	5/2	0.67	31 scfm			
MME-42QES	Spool	1/4" NPT	1/4" NPT	1/8" NPT	5/2	0.89	49 scfm			
MME-43WES	Spool	3/8" NPT	3/8" NPT	1/4" NPT	5/2	1.68	93 scfm			
MME-44ZES	Spool	1/2" NPT	1/2" NPT	1/2" NPT	5/2	2.79	171 scfm			
MME-41NEE	Spool	#10-32	#10-32	#10-32	5/2	0.58	27 scfm			
MME-41PEE	Spool	1/8" NPT	1/8" NPT	1/8" NPT	5/2	0.67	31 scfm			
MME-42QEE	Spool	1/4" NPT	1/4" NPT	1/8" NPT	5/2	0.89	49 scfm			
MME-43WEE	Spool	3/8" NPT	3/8" NPT	1/4" NPT	5/2	1.68	93 scfm			
MME-44ZEE	Spool	1/2" NPT	1/2" NPT	1/2" NPT	5/2	2.79	171 scfm			
MME-41NEEC	Spool	#10-32	#10-32	#10-32	5/3	0.50	23 scfm		•	
MME-41PEEC	Spool	1/8" NPT	1/8" NPT	1/8" NPT	5/3	0.50	23 scfm		•	
MME-42QEEC	Spool	1/4" NPT	1/4" NPT	1/8" NPT	5/3	0.67	49 scfm		•	
MME-43WEEC	Spool	3/8" NPT	3/8" NPT	1/4" NPT	5/3	1.00	72 scfm		•	
MME-44ZEEC	Spool	1/2" NPT	1/2" NPT	1/2" NPT	5/3	1.68	93 scfm		•	
MME-41NEEP	Spool	#10-32	#10-32	#10-32	5/3	0.50	23 scfm			•
MME-41PEEP	Spool	1/8" NPT	1/8" NPT	1/8" NPT	5/3	0.50	23 scfm			•
MME-42QEEP	Spool	1/4" NPT	1/4" NPT	1/8" NPT	5/3	0.89	49 scfm			•
MME-43WEEP	Spool	3/8" NPT	3/8" NPT	1/4" NPT	5/3	1.00	72 scfm			•
MME-44ZEEP	Spool	1/2" NPT	1/2" NPT	1/2" NPT	5/3	1.68	93 scfm			•
MME-41NEEE	Spool	#10-32	#10-32	#10-32	5/3	0.50	23 scfm		•	
MME-41PEEE	Spool	1/8" NPT	1/8" NPT	1/8" NPT	5/3	0.50	23 scfm		•	
MME-42QEEE	Spool	1/4" NPT	1/4" NPT	1/8" NPT	5/3	0.89	49 scfm		•	
MME-43WEEE	Spool	3/8" NPT	3/8" NPT	1/4" NPT	5/3	1.00	72 scfm		•	
MME-44ZEEE	Spool	1/2" NPT	1/2" NPT	1/2" NPT	5/3	1.68	93 scfm		•	



NEW! MAXIMATIC® 2- & 3-WAY VALVES

Direct-Acting 2-Position Solenoid Valves



MME-2SDS-D024



MME-3PDS-D110



Maximatic® Direct-Acting Valves are single solenoid spring return poppet type valves available as either 2-way or 3-way configurations in ports sizes 1/8" NPT and 1/4" NPT. Hardware to stack multiple valves included with each stacking valve (MME-3SDS and MME-2SDS). Includes one long screw, one short screw, one gasket, and one nut.

Flow: 2.3 scfm @ 100 psig
Electrical Connection: DIN connector with LED indicator ("-D"), or 18" Wire Lead ("-W")
Voltage: 12-volt DC ("-012"), 24-volt DC ("-024"), 24-volt AC ("-24A"), 110-volt AC ("-110"), or 220-volt AC ("-220")
Power Consumption: 6.5 Watt
Number of Ports: 2 or 3
Mounting: Body Ported or Stacking

Medium: Air (40 micron filtration), Inert Gas or Liquid
Operating Range: Vacuum to 150 psig

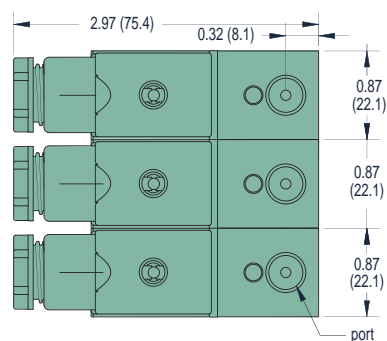
Replacement Stacking Kit

Replacement Stacking Kits are available which include two long screws, two short screws, one gasket and two nuts.

Part No.

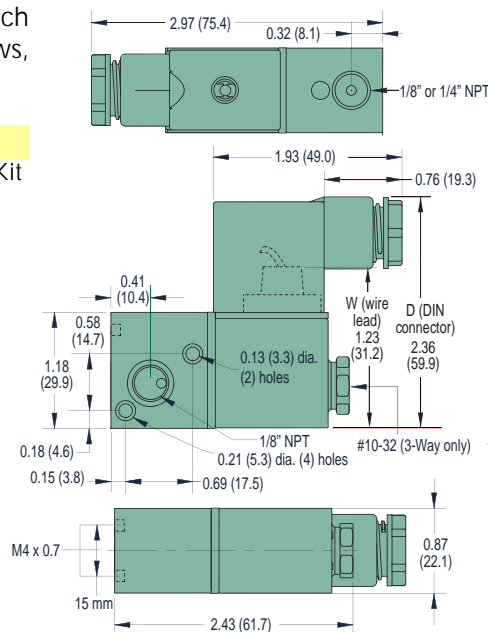
27048

Replacement Stacking Kit

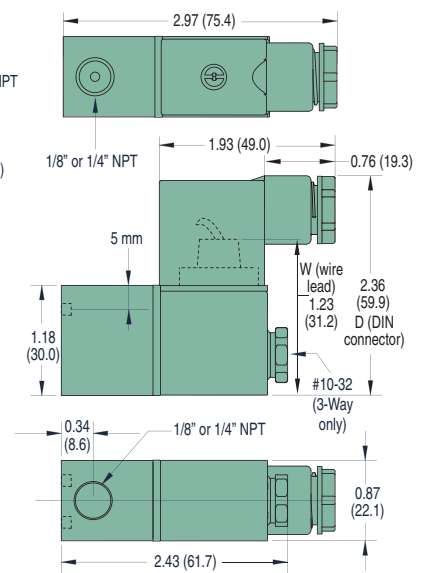


3-Station Configuration

2-Way & 3-Way Valves (Stacking)



2-Way & 3-Way Valves (non-Stacking)



2-Way Valves		Cv/scfm*	3-Way Valves		Inlet	Outlet	Exhaust	Cv/scfm*
MME-2PDS-	A	0.12/6.7	MME-3PDS-	A	1/8" NPT	1/8" NPT	#10-32	0.05/2.3
MME-2SDS- **	W	0.12/6.7	MME-3SDS- **	W	1/8" NPT	1/8" NPT	#10-32	0.05/2.3
MME-2QDS-	P	0.12/6.7	MME-3QDS-	P E	1/4" NPT	1/4" NPT	#10-32	0.05/2.3

** Stacking Valve

* scfm based on flow @ 100 psig

Add Electrical Connection and Voltage Choices to the end of each Base Part Number - Example: **MME-2QDS-W220**

2-Position Single & Double Solenoid Valves



MME-33WES-D110



MME-32QEE-D110

Maximatic® 3-way electronic valves are either N.C. single solenoid spring return or double solenoid spool valves in #10-32 to 1/2" NPT port sizes.

Medium: Air (40 micron filtration) or Inert Gas

Operating Range: 20 to 125 psig

Electrical Connection: DIN connector with LED indicator ("-D"), or 18" Wire Lead ("-W")

Voltage: 12-volt DC ("-012"), 24-volt DC ("-024"), 24-volt AC ("-24A"), 110-volt AC ("-110"), or 220-volt AC ("-220")

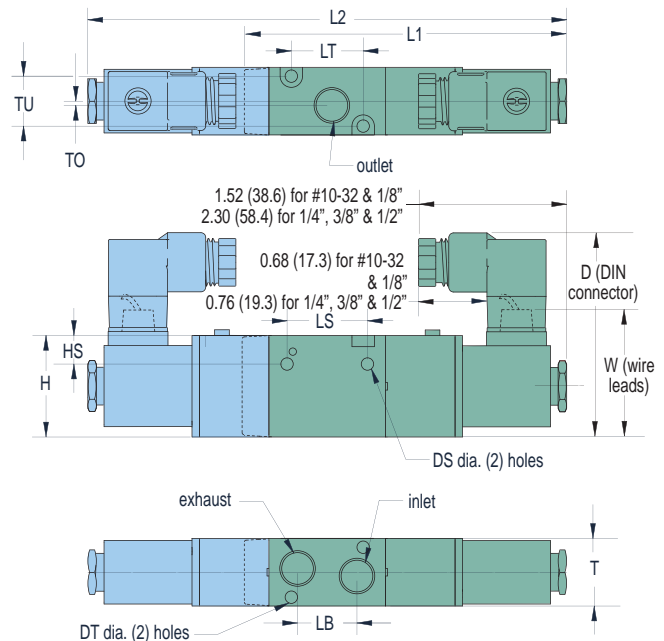
Number of Ports: 3

Mounting: Body Ported, Manifold Mount, Actuator (1/4" NPT only) or NAMUR (3/8" NPT only) available. See Page 207.

Manual Override: Non-locking on MME-31 series. Locking on all other models.

Power Consumption: 2.5 Watts on MME-31 series; 3 Watts for all others.

MAXIMUM
Value. →
→ Performance.



Dim.	MME-31	MME-32	MME-33	MME-34
D	2.14 (54.4)	2.65 (67.3)	2.71 (68.8)	2.94 (74.7)
DS	0.13 (3.3)	0.17 (4.3)	0.17 (4.3)	0.22 (5.6)
DT	0.13 (3.3)	0.13 (3.3)	0.17 (4.3)	0.17 (4.3)
H	1.07 (27.2)	1.38 (35.1)	1.58 (40.1)	1.97 (50.0)
HS	0.30 (7.6)	0.31 (7.9)	0.41 (10.4)	0.53 (13.5)
L1	3.38 (85.9)	4.39 (111.5)	4.70 (119.4)	5.39 (136.9)
L2	5.02 (127.5)	6.49 (164.8)	6.76 (171.7)	7.55 (191.8)
LB	0.63 (16.0)	0.71 (18.0)	0.94 (23.9)	1.42 (36.1)
LS	0.83 (21.1)	0.98 (24.9)	1.18 (30.0)	2.01 (51.1)
LT	0.75 (19.1)	1.30 (33.0)	1.38 (35.1)	1.73 (43.9)
T	0.71 (18.0)	0.87 (22.1)	1.06 (26.9)	1.34 (34.0)
TO	0.06 (1.5)	0.06 (1.5)	0.16 (4.1)	0.16 (4.1)
TU	0.71 (18.0)	0.87 (22.1)	1.06 (26.9)	1.34 (34.0)
W	1.32 (33.5)	1.51 (38.4)	1.54 (39.1)	1.73 (43.9)

Single Solenoid Valves		Double Solenoid Valves		Inlet	Outlet	Exhaust	Cv/scfm*
MME-31NES-		MME-31NEE-		#10-32	#10-32	#10-32	0.58/27
MME-31PES-		MME-31PEE-		1/8" NPT	1/8" NPT	1/8" NPT	0.67/31
MME-32QES-		MME-32QEE-		1/4" NPT	1/4" NPT	1/8" NPT	0.89/49
MME-33WES-		MME-33WEE-		3/8" NPT	3/8" NPT	1/4" NPT	1.68/93
MME-34ZES-		MME-34ZEE-		1/2" NPT	1/2" NPT	1/2" NPT	2.79/171

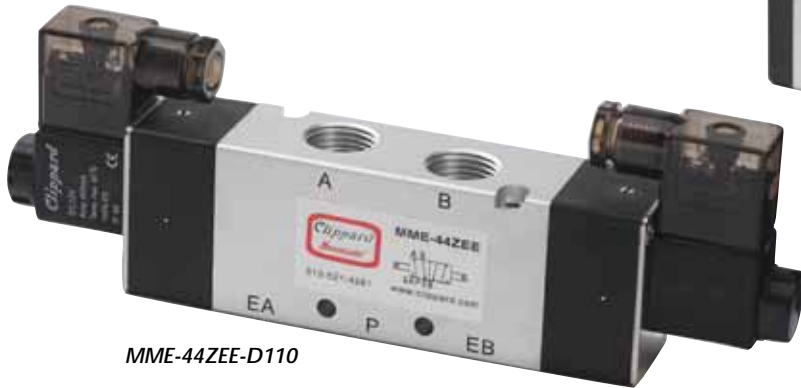
* scfm based on flow @ 100 psig

Add Electrical Connection and Voltage Choices to the end of each Base Part Number - Example: **MME-34ZEE-W024**



NEW! MAXIMATIC® 4-WAY VALVES

2-Position Single & Double Solenoid Valves



MME-44ZEE-D110



MME-44ZES-D012

Maximatic® 4-way solenoid controlled pilot operated valves are either single solenoid spring return or double solenoid spool valves in #10-32 thread to 1/2" NPT port sizes.

Medium: Air (40 micron filtration) and Inert Gas

Operating Range: 20 to 125 psig

Electrical Connection: DIN connector with LED indicator ("-D"), or 18" Wire Lead ("-W")

Voltage: 12-volt DC ("-012"), 24-volt DC ("-024"), 24-volt AC ("-

24A"), 110-volt AC ("-110"), or 220-volt AC ("-220")

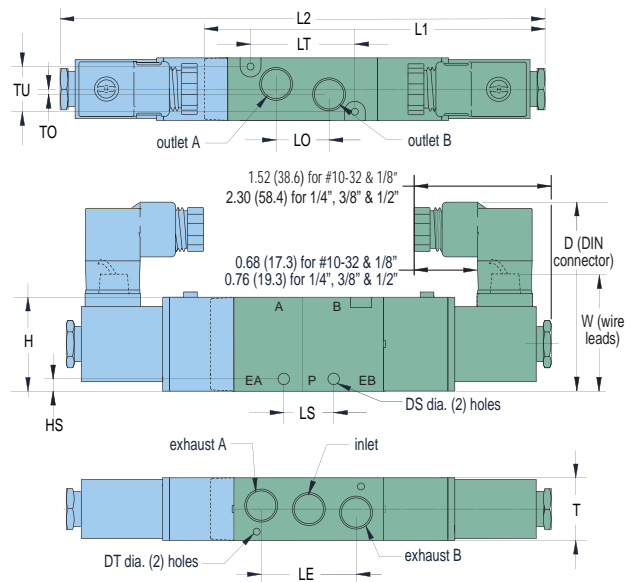
Number of Ports: 5

Mounting: Body Ported, Manifold Mount

Manual Override: Non-locking on MME-41 models. Locking on all other models.

Power Consumption: 2.5 Watts on MME-41 models; 3 Watts for all others.

Dim.	MME-41	MME-42	MME-43	MME-44
D	2.14 (54.4)	2.65 (67.3)	2.71 (68.8)	2.94 (74.7)
DS	0.13 (3.3)	0.17 (4.3)	0.17 (4.3)	0.21 (5.3)
DT	0.13 (3.3)	0.13 (3.3)	0.17 (4.3)	0.17 (4.3)
H	1.07 (27.2)	1.38 (35.1)	1.58 (40.1)	1.97 (50.0)
HS	0.16 (4.1)	0.28 (7.1)	0.26 (6.6)	0.29 (7.4)
L1	3.81 (96.8)	4.49 (114.0)	5.19 (131.8)	6.39 (162.3)
L2	5.54 (140.7)	6.49 (164.8)	7.24 (183.9)	8.48 (215.4)
LE	1.09 (27.7)	1.42 (36.1)	1.77 (45.0)	2.48 (63.0)
LO	0.63 (16.0)	0.74 (13.9)	0.96 (24.4)	1.42 (36.1)
LS	0.56 (14.2)	0.98 (24.9)	0.95 (24.1)	1.11 (28.2)
LT	1.18 (30.0)	1.40 (35.6)	1.97 (50.0)	2.82 (71.6)
T	0.71 (18.0)	0.86 (21.8)	1.06 (26.1)	1.34 (34.0)
TO	0.11 (2.8)	0.13 (3.3)	0.16 (4.1)	0.19 (4.8)
TU	0.50 (12.7)	0.65 (16.5)	0.80 (20.3)	1.07 (27.2)
W	1.32 (33.5)	1.51 (38.4)	1.54 (39.1)	1.73 (43.9)



Single Solenoid Valves		Double Solenoid Valves		Inlet	Outlet	Exhaust	Cv/scfm*
MME-41NES-		MME-41NEE-		#10-32	#10-32	#10-32	0.58/27
MME-41PES-		MME-41PEE-		1/8" NPT	1/8" NPT	1/8" NPT	0.67/31
MME-42QES-		MME-42QEE-		1/4" NPT	1/4" NPT	1/8" NPT	0.89/49
MME-43WES-		MME-43WEE-		3/8" NPT	3/8" NPT	1/4" NPT	1.68/93
MME-44ZES-		MME-44ZEE-		1/2" NPT	1/2" NPT	1/2" NPT	2.79/171

* scfm based on flow @ 100 psig

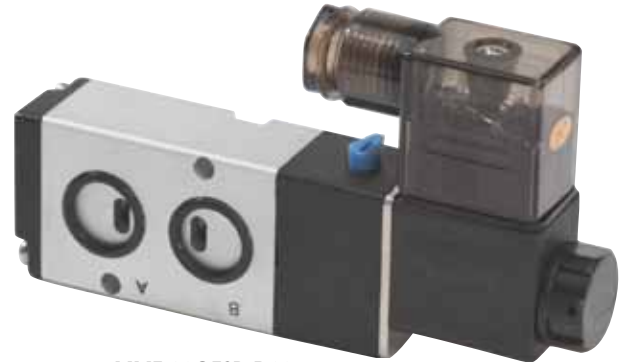
Add Electrical Connection and Voltage Choices to the end of each Base Part Number - Example: **MME-43WEE-D110**

2-Position Single Solenoid Valves

1/4" & 3/8" NAMUR Style



MME-33WESB-D012



MME-32QESB-D220

Maximatic® 3-way and 4-way single solenoid spring return spool valves are also available in 1/4" NPT actuator mount or 3/8" NAMUR mount.

Medium: Air (40 micron filtration) or Inert Gas

Operating Range: 20 to 125 psig

Electrical Connection: DIN terminal with LED indicator ("-D"), or Grommet with 18" Wire Lead ("-W")

Voltage: 12-volt DC ("-012"), 24-volt DC ("-024"), 24-volt AC ("-24A"), 110-volt AC ("-110"), or 220-volt AC ("-220")

Number of Ports: 3 or 5

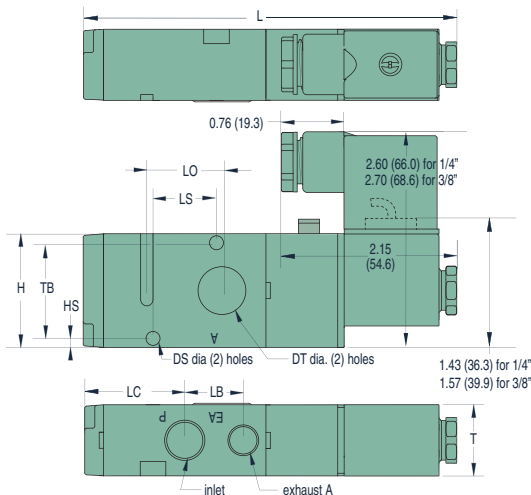
Mounting: Actuator (1/4" NPT only) or NAMUR (3/8" NPT only).

Manual Override: Locking

Power Consumption: 3 Watts

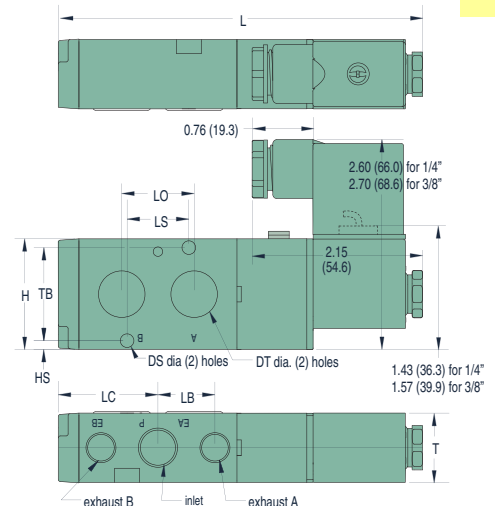
NAMUR/Actuator mount available on other 3- and 4-way Electronic and Air Pilot valves—
Call for specifications.

3-Way Solenoid Valves



Dim.	1/4" NPT	3/8" NPT
DS	0.17 (4.3)	0.22 (5.6)
DT	0.72 (18.3)	0.78 (19.8)
H	1.38 (35.1)	1.58 (40.1)
HS	0.09 (2.3)	0.15 (3.8)
L	4.49 (114.0)	5.19 (131.8)
LC	1.21 (30.7)	1.57 (39.9)
LB	0.71 (18.0)	0.94 (23.9)
LO	0.91 (23.1)	0.94 (23.9)
LS	0.79 (20.1)	0.94 (23.9)
T	0.86 (21.8)	1.06 (26.9)
TB	1.14 (29.0)	1.26 (32.0)

4-Way Solenoid Valves



3-Way Single Solenoid Valves

MME-32QESB-
MME-33WESB-



Supply Port

1/4" NPT
3/8" NPT

Outlet

0.72"
0.78"

Exhaust

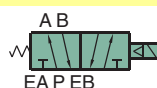
1/4" NPT
1/4" NPT

Cv/scfm*

0.89/49
1.68/93

4-Way Single Solenoid Valves

MME-42QESB-
MME-43WESB-



Supply Port

1/4" NPT
3/8" NPT

Outlet

0.72"
0.78"

Exhaust

1/4" NPT
1/4" NPT

Cv/scfm*

0.89/49
1.68/93

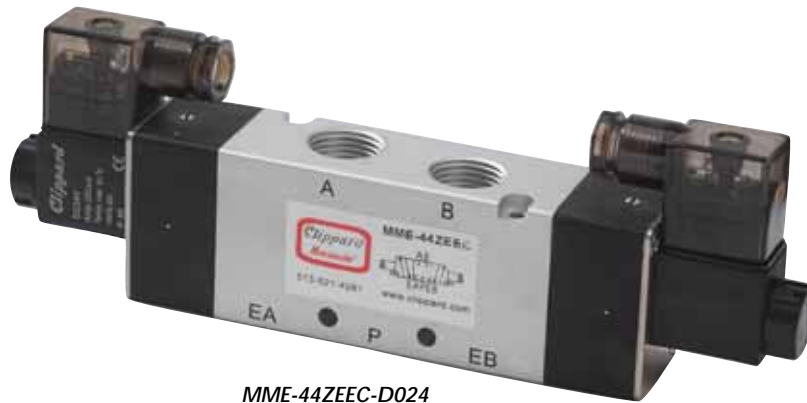
* scfm based on flow @ 100 psig

Add Electrical Connection and Voltage Choices to the end of each Base Part Number - Example: **MME-42QESB-D110**



NEW! MAXIMATIC® 4-WAY VALVES

3-Position Spring Centered Double Solenoid Valves



MME-44ZEEC-D024

Maximatic® 4-way double solenoid spring centered valves with closed center, pressure center or exhaust center spools are available from #10-32 thread to 1/2" NPT port sizes.

Medium: Air (40 micron filtration) or Inert Gas

Operating Range: 30 to 125 psig on MME-41 series, 20 to 125 psig on all others

Electrical Connection: DIN terminal with LED indicator ("-D"), or 18" Wire Lead ("-W")

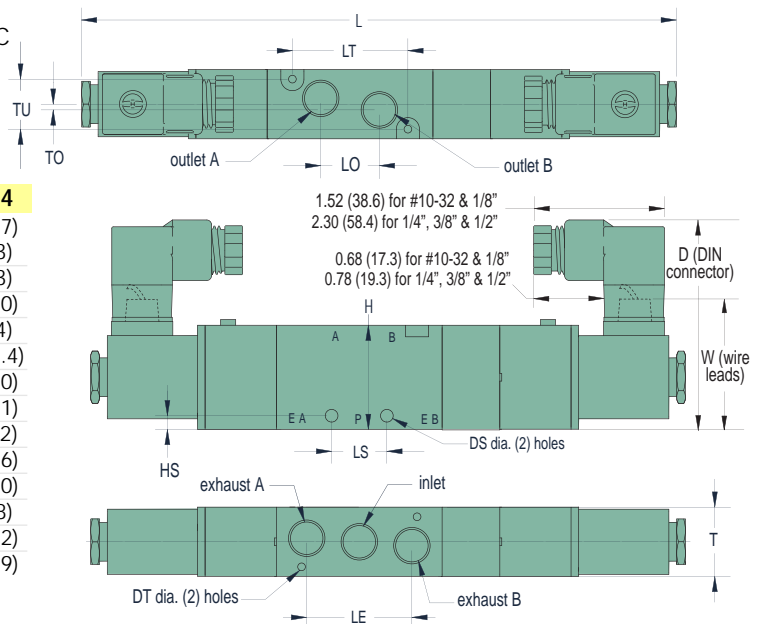
Voltage: 12-volt DC ("-012"), 24-volt DC ("-024"), 24-volt AC ("-24A"), 110-volt AC ("-110"), or 220-volt AC ("-220")

Number of Ports: 5

Mounting: Body Ported, Manifold Mount

Manual Override: Non-locking on MME-41 Series. Locking on all other models.

Power Consumption: 2.5 Watts on MME-41 models; 3 Watts for all others.



Dim.	MME-41	MME-42	MME-43	MME-44
D	2.14 (54.4)	2.65 (67.3)	2.71 (68.8)	2.94 (74.7)
DS	0.13 (3.3)	0.17 (4.3)	0.17 (4.3)	0.21 (5.3)
DT	0.13 (3.3)	0.13 (3.3)	0.17 (4.3)	0.17 (4.3)
H	1.07 (27.2)	1.38 (35.1)	1.58 (40.1)	1.97 (50.0)
HS	0.16 (4.1)	0.28 (7.1)	0.26 (6.6)	0.29 (7.4)
L	6.13 (155.7)	7.24 (183.9)	7.98 (202.7)	8.48 (215.4)
LE	1.09 (27.7)	1.42 (36.1)	1.77 (45.0)	2.48 (63.0)
LO	0.63 (16.0)	0.74 (18.8)	0.96 (24.4)	1.42 (36.1)
LS	0.56 (14.2)	0.98 (24.9)	0.95 (24.1)	1.11 (28.2)
LT	1.18 (30.0)	1.40 (35.6)	1.97 (50.0)	2.82 (71.6)
T	0.71 (18.0)	0.86 (21.8)	1.06 (26.9)	1.34 (34.0)
TO	0.11 (2.8)	0.13 (3.3)	0.16 (4.1)	0.19 (4.8)
TU	0.50 (12.7)	0.65 (16.5)	0.80 (20.3)	1.07 (27.2)
W	1.32 (33.5)	1.51 (38.4)	1.54 (39.1)	1.73 (43.9)



Closed Center	Pressure Center	Exhaust Center	Inlet	Outlet	Exhaust	Cv/scfm*
MME-41NEEC-	MME-41NEEP-	MME-41NEEE-	#10-32	#10-32	#10-32	0.50/23
MME-41PEEC-	MME-41PEEP-	MME-41PEEE-	1/8" NPT	1/8" NPT	1/8" NPT	0.50/23
MME-42QEEC-	MME-42QEPP-	MME-42QEEE-	1/4" NPT	1/4" NPT	1/4" NPT	0.89/49
MME-43WEEC-	MME-43WEEP-	MME-43WEEE-	3/8" NPT	3/8" NPT	1/4" NPT	1.00/72
MME-44ZEEC-	MME-44ZEEP-	MME-44ZEEE-	1/2" NPT	1/2" NPT	1/2" NPT	1.68/93

* scfm based on flow @ 100 psig

Add Electrical Connection and Voltage Choices to the end of each Base Part Number - Example: **MME-41PEEP-W024**

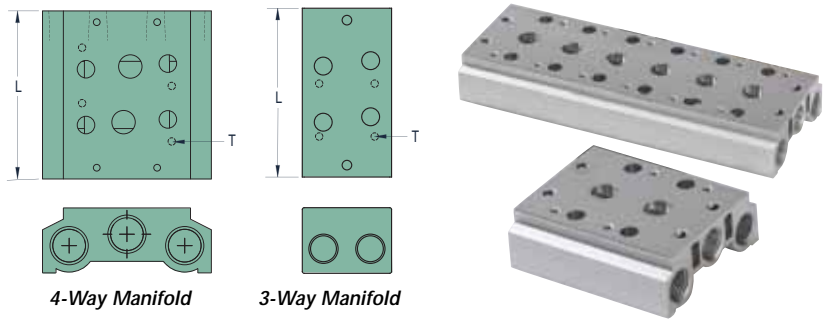


Rebuild Kits. Convenient rebuild kits are available which contain common maintenance items that may be needed during the life of the valve. Each contains a spool, diamond seal, two pilot seals, two pistons with seals, and spring. Consult factory for 3-position kits.

Part No.

27040-31	3-Way Kit, MME-31
27040-32	3-Way Kit, MME-32
27040-33	3-Way Kit, MME-33
27040-34	3-Way Kit, MME-34
27040-41	4-Way 2 Pos. Kit, MME-41
27040-42	4-Way 2 Pos. Kit, MME-42
27040-43	4-Way 2 Pos. Kit, MME-43
27040-44	4-Way 2 Pos. Kit, MME-44

Parallel Bar Manifolds



Valve Series	"L" Dimension					"T" Mtg. Thd.
	2-Station	4-Station	6-Station	8-Station	16-Station	
MME-31/41	2.24 (56.9)	3.73 (94.7)	5.25 (133.4)	6.75 (171.5)	12.69 (322.3)	M4
MME-32/42	2.71 (68.8)	4.50 (114.3)	6.33 (160.8)	8.13 (206.5)	15.38 (390.7)	M4
MME-33/43	3.22 (81.8)	5.42 (137.7)	7.62 (193.5)	9.82 (249.4)	18.63 (473.2)	M5
MME-34/44	3.85 (97.8)	6.56 (166.6)	9.38 (238.3)	12.10 (307.3)	23.11 (587.0)	M5

Parallel circuit manifold bars are available for all sizes of MME 3- and 4-way valves. Manifolds are made in increments of two stations from two to 16, and are supplied with mounting screws and gaskets. Spare kits are also available which include two screws and a gasket. Blank plate supplied with one gasket, two screws and metal plate.

Valve Series	Manifold Inlet/						
	Exhaust	Blank Plate	2-Station	4-Station	6-Station	8-Station	16-Station
3-Way Valve Manifolds							
MME-31	1/8"	MMM-31-B	MMM-31-02	MMM-31-04	MMM-31-06	MMM-31-08	MMM-31-16
MME-32	1/4"	MMM-32-B	MMM-32-02	MMM-32-04	MMM-32-06	MMM-32-08	MMM-32-16
MME-33	3/8"	MMM-33-B	MMM-33-02	MMM-33-04	MMM-33-06	MMM-33-08	MMM-33-16
MME-34	1/2"	MMM-34-B	MMM-34-02	MMM-34-04	MMM-34-06	MMM-34-08	MMM-34-16

3-Way Spare Mounting Kit Hardware							
27041-31	Hardware Kit for MME-31 Series Valves			27041-33	Hardware Kit for MME-33 Series Valves		
27041-32	Hardware Kit for MME-32 Series Valves			27041-34	Hardware Kit for MME-34 Series Valves		

Valve Series	Manifold Inlet/						
	Exhaust	Blank Plate	2-Station	4-Station	6-Station	8-Station	16-Station
4-Way Valve Manifolds							
MME-41	1/4"	MMM-41-B	MMM-41-02	MMM-41-04	MMM-41-06	MMM-41-08	MMM-41-16
MME-42	1/4"	MMM-42-B	MMM-42-02	MMM-42-04	MMM-42-06	MMM-42-08	MMM-42-16
MME-43	3/8"	MMM-43-B	MMM-43-02	MMM-43-04	MMM-43-06	MMM-43-08	MMM-43-16
MME-44	1/2"	MMM-44-B	MMM-44-02	MMM-44-04	MMM-44-06	MMM-44-08	MMM-44-16

4-Way Spare Mounting Kit Hardware							
27041-41	Hardware Kit for MME-41 Series Valves			27041-43	Hardware Kit for MME-43 Series Valves		
27041-42	Hardware Kit for MME-42 Series Valves			27041-44	Hardware Kit for MME-44 Series Valves		

Replacement Coils



Replacement coils for solenoid valves are available in voltages from 12 VDC to 220 VAC with either DIN connector or 18" wire leads.

Description	2.5 Watt	3.0 Watt	6.5 Watt
	#10-32 & 1/8"	1/4", 3/8" & 1/2"	Direct-Acting
DIN Connectors			
12-Volt DC	27001-D012	27065-D012	27002-D012
24-Volt DC	27001-D024	27065-D024	27002-D024
110-Volt AC	27001-D110	27065-D110	27002-D110
220-Volt AC	27001-D220	27065-D220	27002-D220
24-Volt AC	27001-D24A	27065-D24A	27002-D24A
Wire Leads			
12-Volt DC	27001-W012	27065-W012	27002-W012
24-Volt DC	27001-W024	27065-W024	27002-W024
110-Volt AC	27001-W110	27065-W110	27002-W110
220-Volt AC	27001-W220	27065-W220	27002-W220
24-Volt AC	27001-W24A	27065-W24A	27002-W24A